

Technical Data Sheet

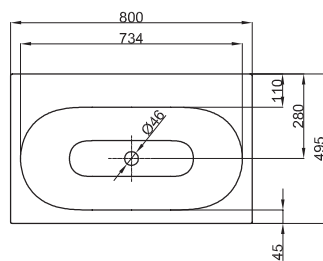


BETTECOMODO WALL MOUNTED WASHBASIN

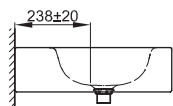
Wall mounted washbasin rectangular, 800 x 495 x 140 mm, enamelled, without a taphole or an overflow, incl. fastening material

Design: Tesseraux + Partner

article no.	A211
dimension	80 x 49,5 x 14 cm
colours	can be delivered in white, exclusive colours and other sanitary colours
extras	available with the easy-to-clean surface BETTEGLAZE® PLUS



Recommended taps



spout projection:
ca. 238 mm from wall

Dimensions for installation and connection

